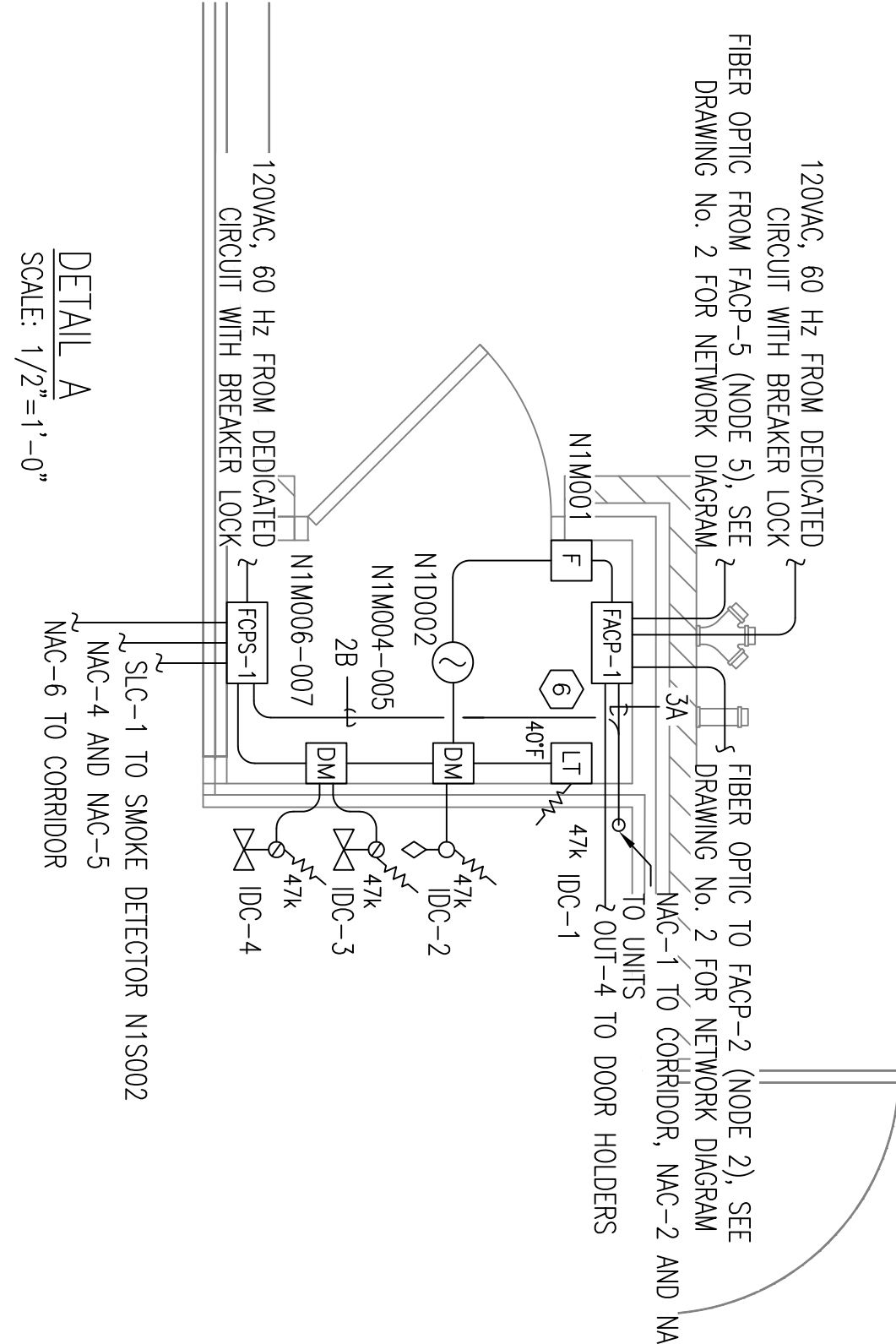


FIRE ALARM LAYOUT AND WIRING, BUILDING 1, FIRST FLOOR  
SCALE: 1/8" = 1'-0"

CABLE TAG IDENTIFICATION			
SYMBOL	DESCRIPTION	GUAGE (MIN)	TYPE
A	SIGNAL LINE CIRCUIT (SLC)	16 AWG	2/C, PPR
B	NOTIFICATION APPLIANCE CIRCUIT (NAC)	12 AWG	2/C, PPR
C	INITIATING DEVICE CIRCUIT (IDC)	14 AWG	2/C, PPR
E	DOOR HOLDER, 24VDC	12 AWG	2/C, PPR
F	FIBER OPTIC NETWORK	N/A	MULTI-MODE



DETAIL A  
SCALE: 1/2" = 1'-0"

GENERAL NOTES

1. REFER TO FIRELIFE INTELLIGENT CONTROL PANEL, SLC WIRING MANUAL, FOR DEVICE WIRING EXAMPLES AND TROUBLESHOOTING GUIDELINES.
2. THE OPERABLE PART OF THE FIRE ALARM PULL STATIONS SHALL BE MOUNTED BETWEEN 42" AND 54" ABOVE THE WALKING SURFACE.
3. WALL-MOUNTED HORN/STROBES AND STROBES SHOULD BE INSTALLED SO THAT THE ENTIRE LENS IS BETWEEN 80" AND 96" ABOVE WALKING SURFACE AND SYNCHRONIZED.
4. WALL-MOUNTED HORNS SHOULD BE INSTALLED SO THAT THE TOP OF THE APPLIANCE IS NOT LESS THAN 96" ABOVE THE FINISHED FLOOR.
5. SMOKE DETECTORS, WHERE APPLICABLE, SHOULD NOT BE LOCATED IN A DIRECT AIR FLOW NOR CLOSER THAN 3 FEET TO AN AIR SUPPLY DIFFUSER OR RETURN AIR OPENING.
6. SPRINKLER RISER ROOM LOW TEMPERATURE SENSORS TO BE WIRED NORMALLY OPEN (N.O.) AND CLOSE UPON DROP IN TEMPERATURE BELOW 40° FAHRENHEIT.
7. SEE DRAWING NO. FA-1 GENERAL NOTES, SYMBOL LEGEND, CABLE TAG IDENTIFICATION AND INDEX OF DRAWINGS.
8. SEE DRAWING NO. FA-22 AND FA-23 FOR RISER DIAGRAM AND INPUT/OUTPUT MATRIX.

REVISIONS

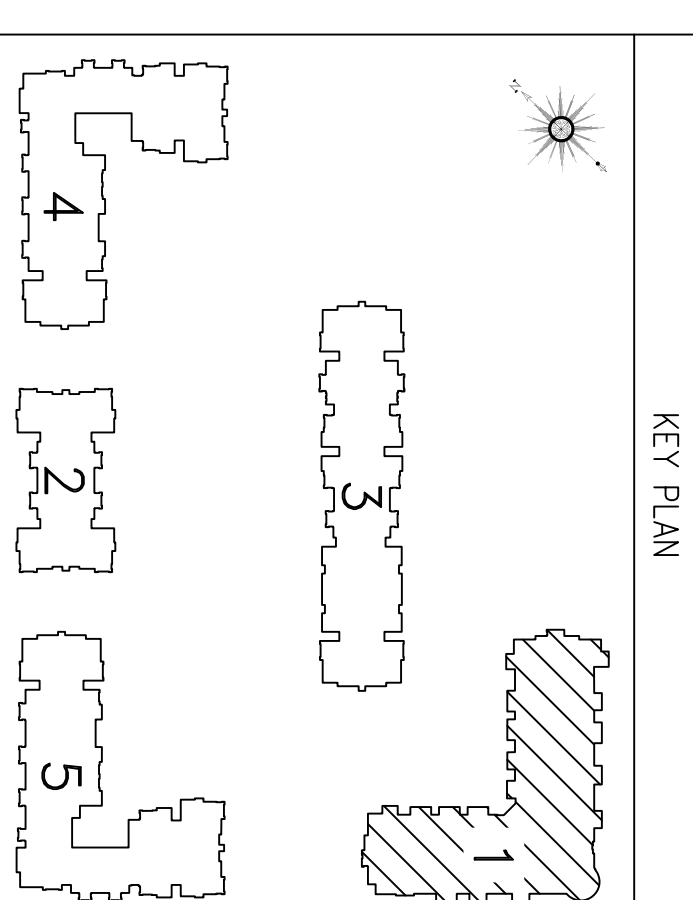
REVISION	DESCRIPTION	BY:	CHK:	DATE
0	ORIGINAL ISSUE	PAJ	JB	3/20/15

PROJECT LOCATION:

VAS APARTMENTS, LLC  
VILLAGE CLUB AT SANDHILL APARTMENTS  
COLUMBIA, SOUTH CAROLINA 29229

DRAWING TITLE:

FIRE ALARM AND DETECTION SYSTEM  
PLAN AND DEVICE LAYOUT  
BUILDING 1 - FIRST FLOOR



DRAWN	DESIGNED	APPROVED	PROJECT NO.	ISSUE DATE
<i>Shad J. Stephens</i>	<i>Shad J. Stephens</i>	<i>Shad J. Stephens</i>	SRF-007	3/20/2015

SCALE: 1/8" = 1'-0"

DRIVING NO. FA-3  
ARCH D 0

STIEL-BAR TECHNOLOGY  
2839 GRAY FOX ROAD  
MONROE, NORTH CAROLINA 28079  
(704) 680-7595